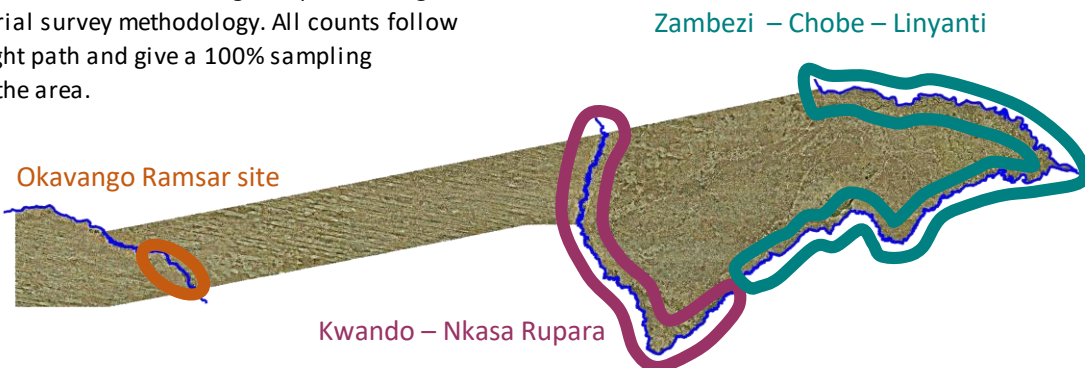


Wildlife census of Namibia's North East Rivers

This poster presents the results of aerial surveys of game animals in the wetlands of north-eastern Namibia. The area is surrounded by Angola, Botswana, Zambia and Zimbabwe and is a key area for wildlife, which moves freely between Namibia and neighbouring countries.

The aerial surveys cover the Okavango, Kwando, Linyanti, Chobe and Zambezi Rivers and their associated wetlands and floodplains. The Okavango, Kwando, Linyanti and Zambezi rivers provide perennial water. Extensive, broad floodplains along the rivers flood seasonally and there are some small, permanent wetlands. The surveys provide information on the distribution, abundance and trends of wildlife.

Counts are made from a fixed-wing aeroplane using standard aerial survey methodology. All counts follow the same flight path and give a 100% sampling coverage of the area.



Total numbers of animals recorded in surveys

Species	2004	2007	2009	2017
Buffalo	3,262	5,951	9,633	6,650
Common Impala	742	1,361	1,457	501
Elephant	860	3,062	3,450	2,220
Plains Zebra	1,084	1,653	1,689	1,582
Hippopotamus	1,387	1,269	1,291	1,129
Red Lechwe	738	767	777	1,971
Reedbuck	76	162	105	145
Waterbuck	60	30	131	82
Crocodile	207	243	151	50
Baboon	158	105		3
Blue Wildebeest	6	35	64	55
Giraffe	21	1	11	36
Kudu	98	134	171	90
Ostrich			20	6
Roan			29	4
Sable	45	102	20	10
Tsessebe	25	31	17	23
Warthog	226	176	173	96
Total	8,995	15,082	19,189	14,653

Latest numbers recorded per river system

	Okavango Ramsar site	Kwando-Nkasa Rupara **	Zambezi-Chobe-Linyanti
Buffalo	366	6,045	239
Common Impala	133	368	
Elephant	70	2,035	115
Plains Zebra	47	31	1,504
Hippopotamus	205	868	56
Red Lechwe	369	1,602	
Reedbuck	22	123	
Waterbuck		82	
Crocodile	43	4	3
Baboon		3	
Blue Wildebeest	32	23	
Giraffe	25	11	
Kudu	90		
Ostrich	3		3
Roan	2	2	
Sable	5	5	
Tsessebe	23		
Warthog	48	44	4
Total	1,483	11,246	1,924

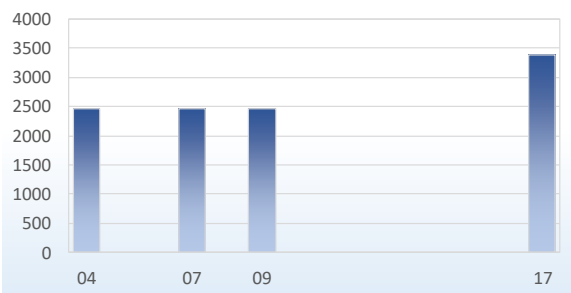
* Total

Population estimate
9,070
1,378
2,127
1,819
3,298
5,015
493
186
659
14
68
36
298
5
37
18
31
1,097
25,649

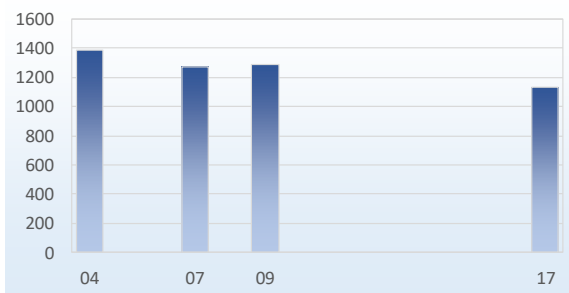
* The best available recent population estimate derived from multiple sources

** The helicopter count ratio was used to adjust lechwe and impala numbers

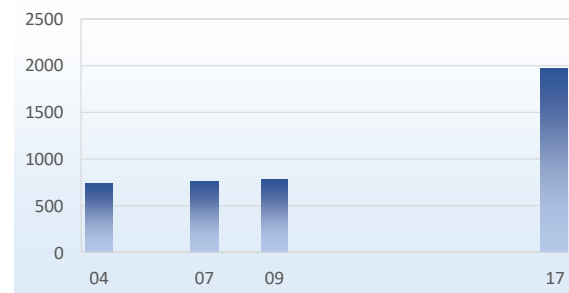
Summary: five wetland species combined



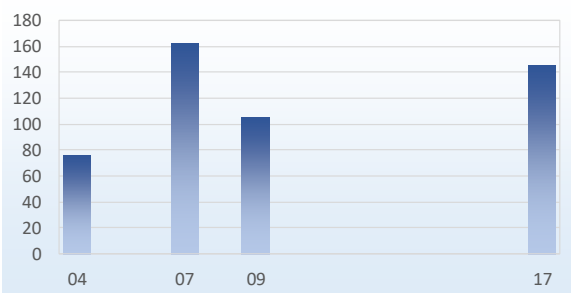
Hippopotamus



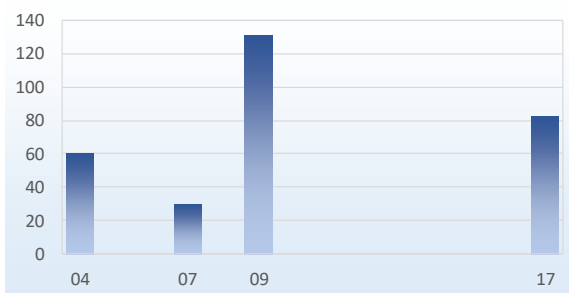
Red Lechwe



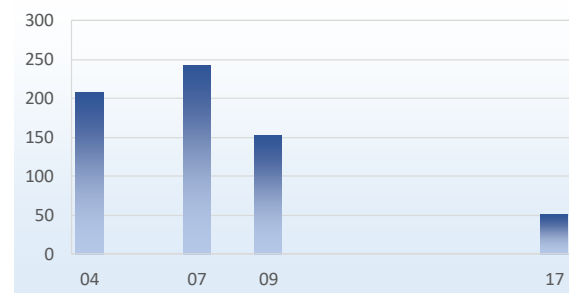
Reedbuck



Waterbuck



Crocodile



Sponsors:

